



PRIME DEVELOPMENT LAND FOR SALE

I-70 & K-7 Highway (SWQ), Bonner Springs, KS



SALE PRICE: \$1.00/SF & \$2.50/SF | 3 LOTS

DEMOGRAPHICS

	1 mile	3 miles	5 miles
Estimated Population	1,715	11,417	44,831
Avg. Household Income	\$88,565	\$81,863	\$98,173

- Lot 1: 21.39 acres | \$1.00/SF
- Lot 2: 1.21 acres | \$2.50/SF
- Lot 3: 1.46 acres | \$2.50/SF
- High traffic area across from new \$45 million industrial development for Old Dominion Freight Line to the north (300 employees)
- I-70 & K-7 Highway carry over 59,400 cars per day
- In proximity to Price Chopper, Walmart Supercenter, Arby's, Taco Johns, Go Carwash and more

 [CLICK HERE TO VIEW MORE LISTING INFORMATION](#)

For More Information Contact:

DANIEL BROCATO | 816.412.7303 | dbrocato@blockandco.com

CARSON ST. CLAIR | 816.412.7306 | cstclair@blockandco.com

Exclusive Agents

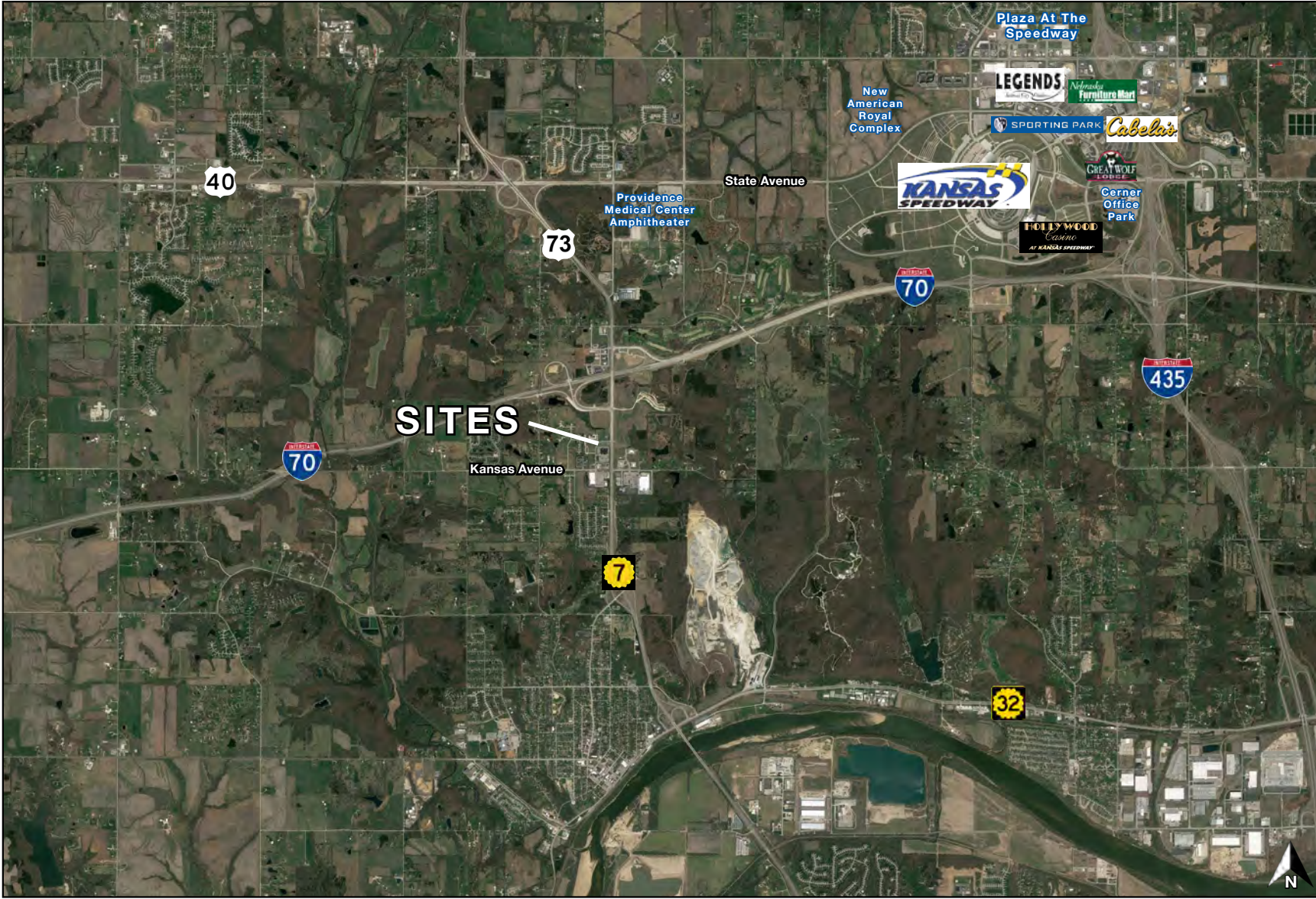




PRIME DEVELOPMENT LAND FOR SALE

I-70 & K-7 Highway (SWQ), Bonner Springs, KS

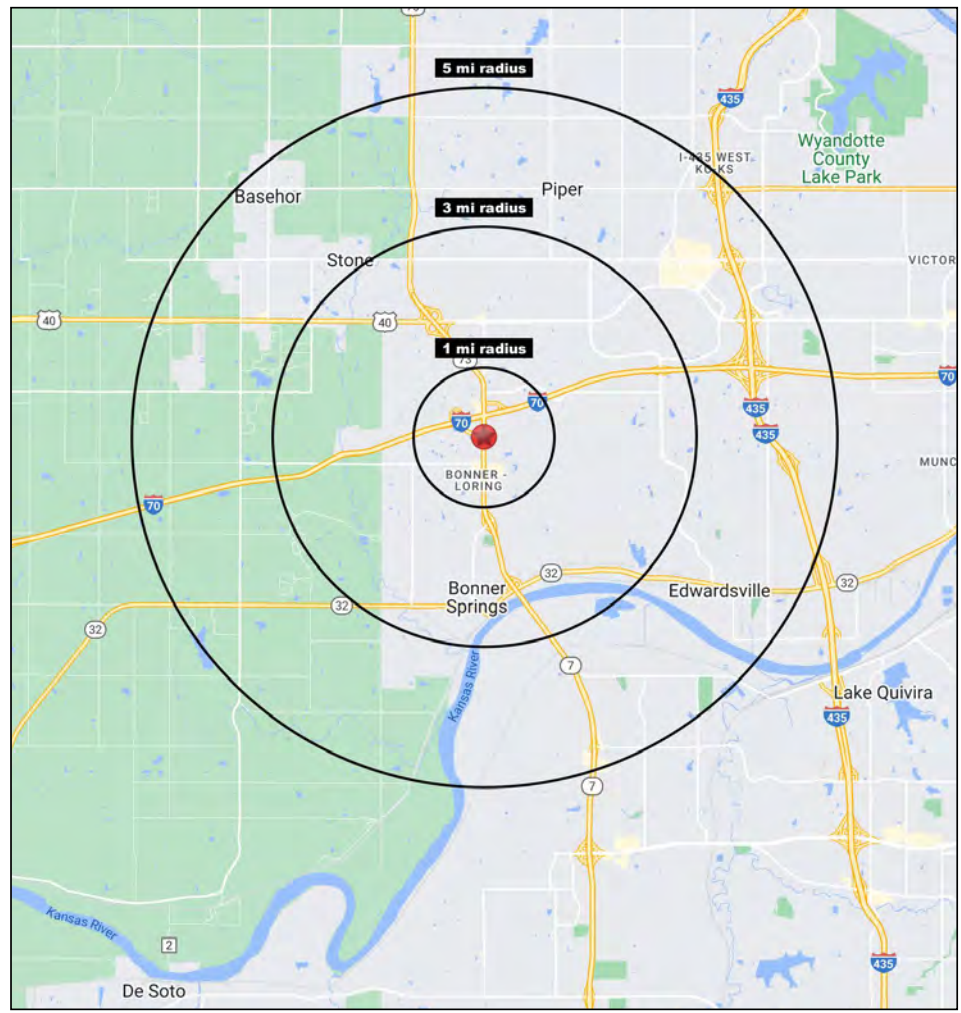
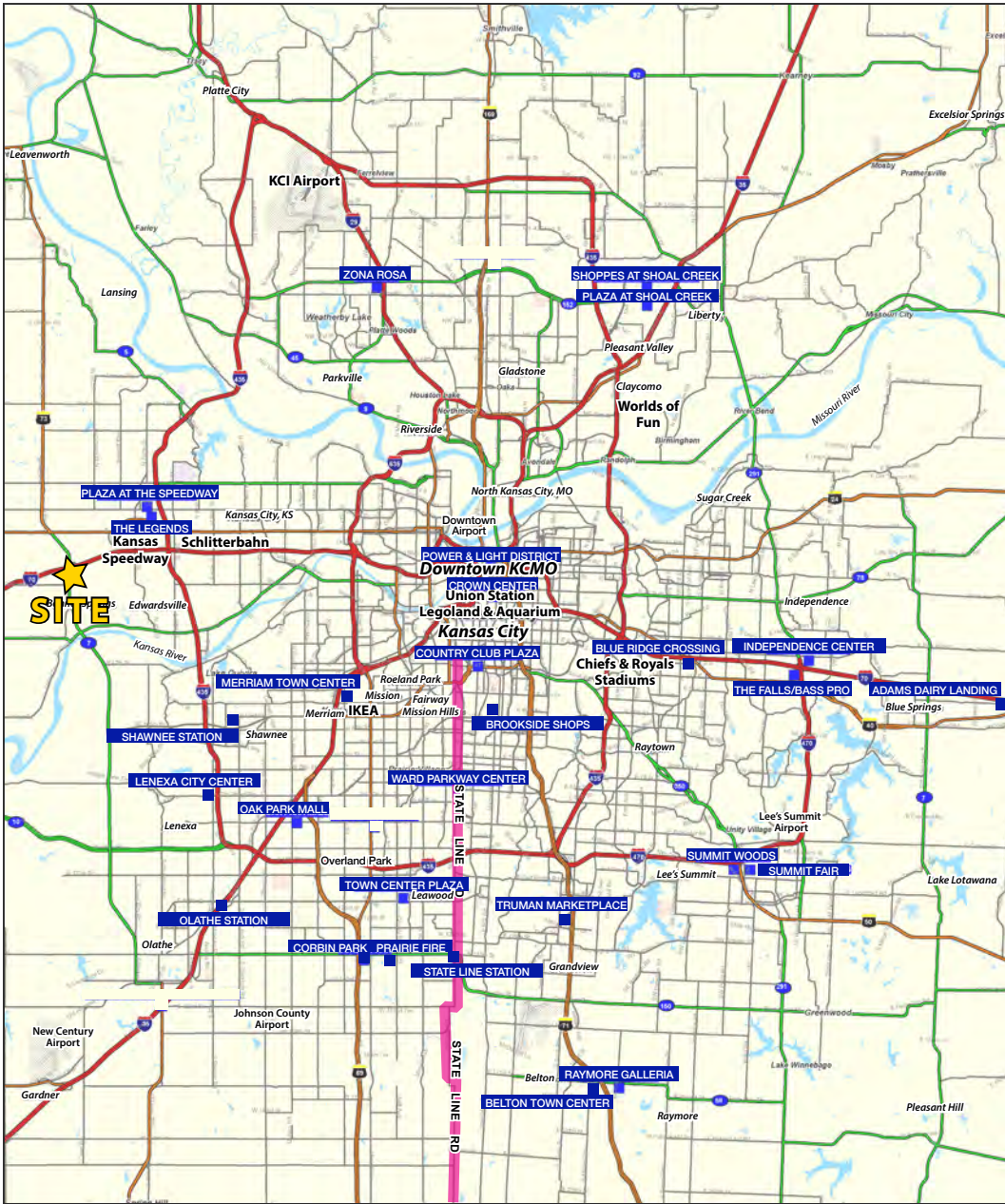
AERIAL





PRIME DEVELOPMENT LAND FOR SALE

I-70 & K-7 Highway (SWQ), Bonner Springs, KS



Block & Company, Inc., Realtors | 605 W. 47th Street, Ste. 200, Kansas City, MO 64112 | 816.753.6000 | www.blockandco.com



All information furnished regarding property for sale or lease is from sources deemed reliable, but no warranty or representation is made as to the accuracy thereof and the same is subject to errors, omissions, changes of prices, rental or other conditions, prior sale or lease or withdrawal without notice.



PRIME DEVELOPMENT LAND FOR SALE

I-70 & K-7 Highway (SWQ), Bonner Springs, KS

I-70 & K-7 Highway (SWQ) Bonner Springs, KS	1 mi radius	3 mi radius	5 mi radius
Population			
2022 Estimated Population	1,715	11,417	44,831
2027 Projected Population	1,855	11,916	47,537
2020 Census Population	1,743	11,426	44,565
2010 Census Population	1,428	9,808	35,899
Projected Annual Growth 2022 to 2027	1.6%	0.9%	1.2%
Historical Annual Growth 2010 to 2022	1.7%	1.4%	2.1%
2022 Median Age	35.1	37.7	36.9
Households			
2022 Estimated Households	624	4,535	15,925
2027 Projected Households	668	4,677	16,838
2020 Census Households	634	4,549	15,846
2010 Census Households	511	3,793	12,835
Projected Annual Growth 2022 to 2027	1.4%	0.6%	1.1%
Historical Annual Growth 2010 to 2022	1.8%	1.6%	2.0%
Race and Ethnicity			
2022 Estimated White	76.1%	73.7%	77.9%
2022 Estimated Black or African American	8.7%	9.7%	7.4%
2022 Estimated Asian or Pacific Islander	1.8%	1.3%	2.0%
2022 Estimated American Indian or Native Alaskan	0.7%	0.8%	0.6%
2022 Estimated Other Races	12.8%	14.4%	12.0%
2022 Estimated Hispanic	11.1%	12.1%	9.1%
Income			
2022 Estimated Average Household Income	\$88,565	\$81,863	\$98,173
2022 Estimated Median Household Income	\$81,691	\$75,580	\$95,527
2022 Estimated Per Capita Income	\$32,217	\$32,550	\$34,947
Education (Age 25+)			
2022 Estimated Elementary (Grade Level 0 to 8)	2.4%	3.7%	2.8%
2022 Estimated Some High School (Grade Level 9 to 11)	6.9%	6.7%	3.9%
2022 Estimated High School Graduate	34.3%	32.7%	24.8%
2022 Estimated Some College	21.6%	22.3%	20.4%
2022 Estimated Associates Degree Only	8.9%	10.1%	10.2%
2022 Estimated Bachelors Degree Only	17.9%	16.3%	24.7%
2022 Estimated Graduate Degree	8.0%	8.2%	13.2%
Business			
2022 Estimated Total Businesses	60	312	1,124
2022 Estimated Total Employees	883	3,673	14,833
2022 Estimated Employee Population per Business	14.6	11.8	13.2
2022 Estimated Residential Population per Business	28.4	36.6	39.9

©2022. Sites USA. Chandler, Arizona. 480-491-1112 Demographic Source: Applied Geographic Solutions 6/2022. TIGER Geographv - RS1

